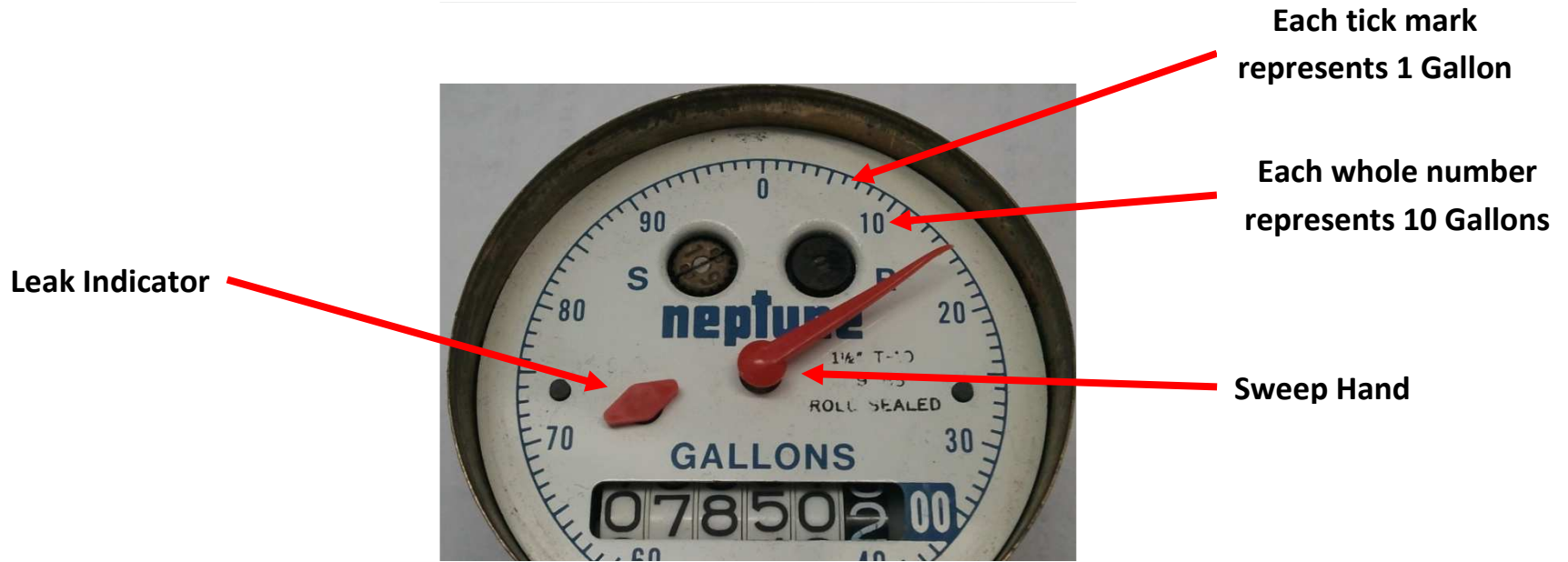


How to Read a Water Meter and Water Bill (1.5" or more)



Read the Meter Left to Right →

0 7 , 8 5 0 , 2 0 0

Hundred Thousands (EX: 850,200 Gallons)

Ten Thousands (EX: 50,200 Gallons)

Thousands (EX: 0,200 Gallons)

Stationary - Ones (Represented by Sweep Hand)

Stationary - Tens (Represented by Sweep Hand)

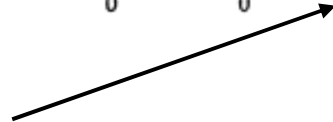
Hundreds (EX: 200 Gallons)

How to Read a Water Meter and Water Bill (1.5" or more)

57 RETAIN BOTTOM PORTION FOR YOUR RECORDS. DETACH AND RETURN STUB WITH PAYMENT.

| | | | | | |
|--------------------------------|-------|-----------|----------|-----------------------|--|
| SERVICE ADDRESS | | | | Last Bill Amount \$. | |
| ACCOUNT NUMBER | CYCLE | BILL DATE | DUE DATE | Payments . | |
| | 01-03 | | | Adjustments . | |
| Rate Class : RESIDENTIAL | | | | Balance Forward \$. | |
| Last payment amount/date: \$. | | | | | |

| WA | Service Period | Days | Meter Number | Mult | Units | Current | Previous | Usage |
|----|----------------|------|--------------|------|-------|---------|----------|-------|
| | | 28 | NM0719 | 1 | TGAL | 0 | 0 | 0 |



The Usage information is located just below the solid line
(about halfway down the water bill)

| WA | Service Period | Days | Meter Number | Mult | Units | Current | Previous | Usage |
|----|-----------------|------|--------------|------|-------|---------|----------|-------|
| | 1/17/12 2/14/12 | 28 | 12345 | 1 | TGAL | 133 | 117 | 16 |

- WA = Water service
- Service Period = Month/Day/Year for readings
- Days = Total days between read period
- Meter Number = Serial number associated with this meter
- Mult = Multiple of specific units (one in most cases)
- Units = Units read in the Thousands
- Current = Meter reading at time of billing
- Previous = Previous billed meter reading
- Usage = Current minus Previous reading